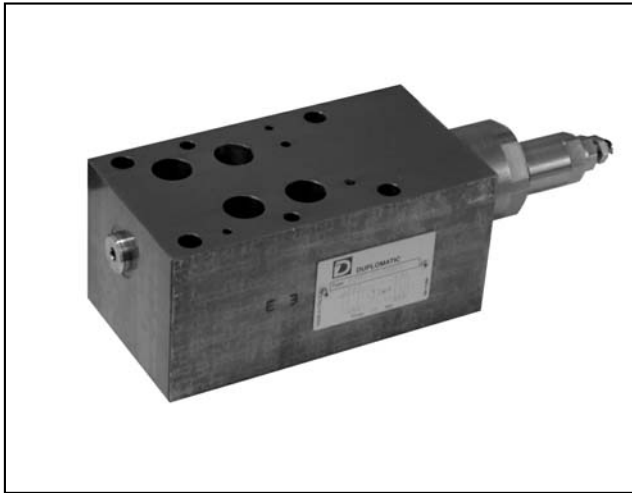




DIPLOMATIC
HYDRAULICS

62 410/102 ED



PZM7

PRESSURE REDUCING VALVE SERIES 10

MODULAR VERSION

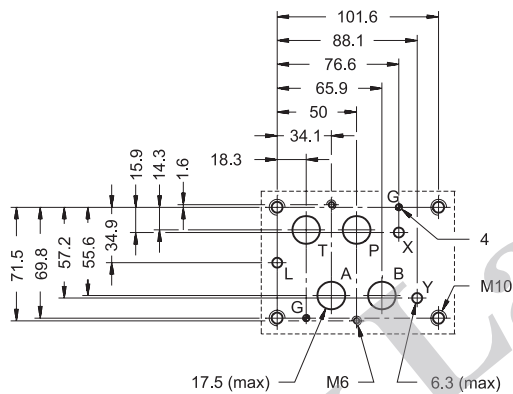
CETOP 07

p max 350 bar

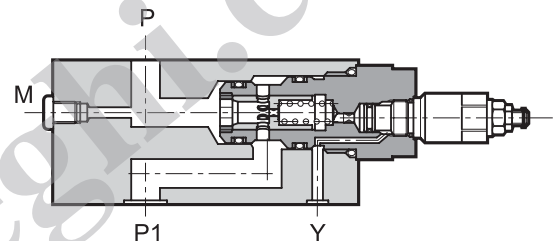
Q max 250 l/min

MOUNTING INTERFACE

CETOP 4.2-4-07



OPERATING PRINCIPLE



- The PZM7 valve is made as a modular valve and has a mounting surface according to the CETOP and ISO standards.
- It is a two-stage type and is used to assure stability of the controlled pressure, even changing the flow that travels through the valve.
- The PZM7M valve can be assembled quickly under the DSP7 directional valves (see catalogue 41 420) without use of pipes, using suitable tie-rods or bolts, forming compact modular groups.
- It is normally supplied with an adjustment knob.

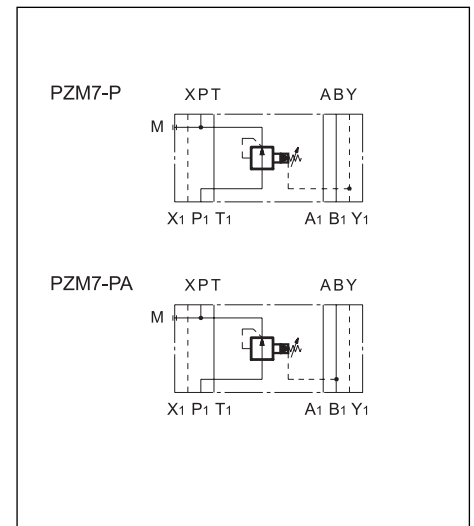
CONFIGURATIONS (see Hydraulic symbols table)

- Configuration "PZM7-P": pressure reduction on line P - external drainage.
- Configuration "PZM7-PA": pressure reduction on line A and valve on line P.

PERFORMANCE RATINGS (measured with mineral oil of viscosity 36cSt at 50°C)

Maximum operating pressure	bar	350
Maximum flow rate	l/min	250
Drainage flow rate	l/min	≤ 0,8
Ambient temperature range	°C	-20 ÷ +50
Fluid temperature range	°C	-20 ÷ +80
Fluid viscosity range	cSt	10 ÷ 400
Recommended viscosity	cSt	25
Fluid contamination degree	According to NAS 1638 class 10	
Mass	kg	8,65

HYDRAULIC SYMBOLS

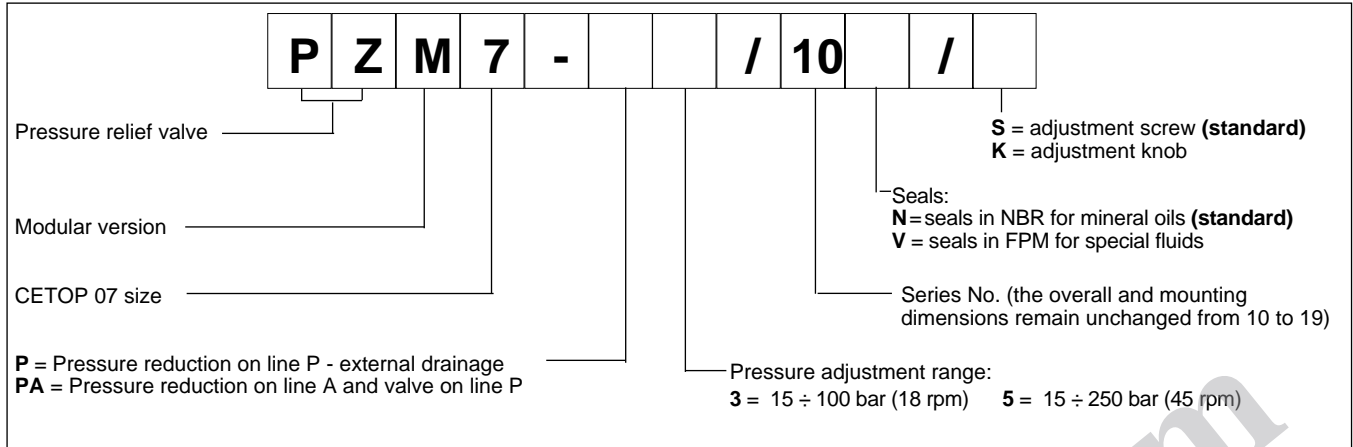




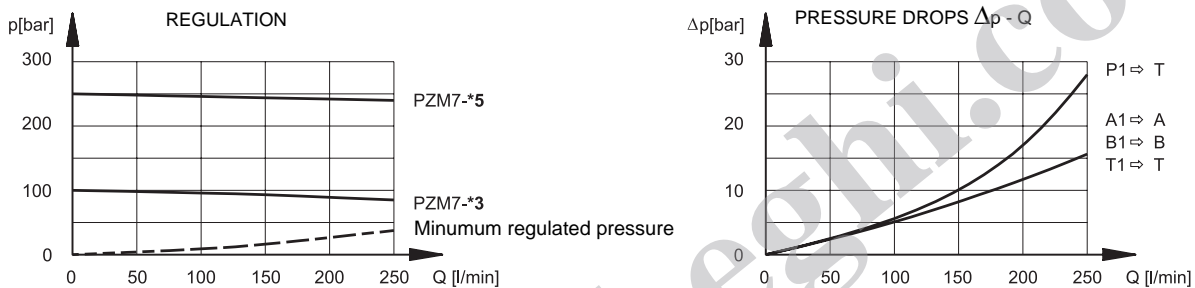
PZM7

SERIES 10

1 - IDENTIFICATION CODE



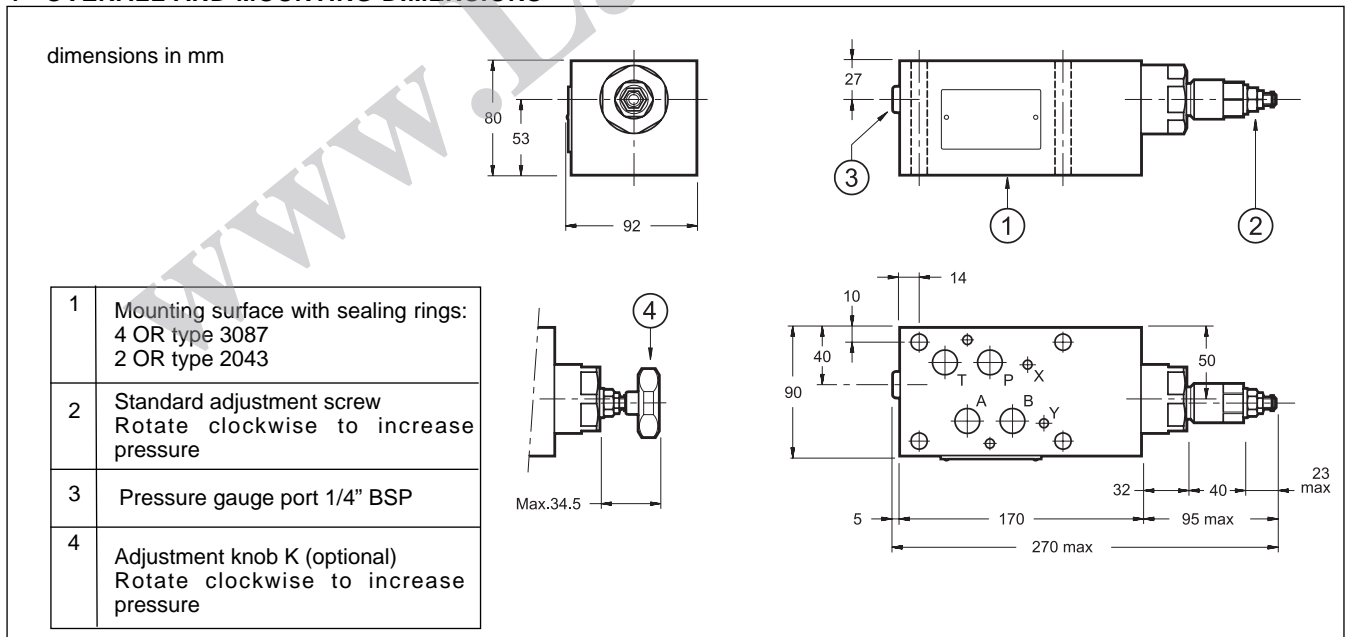
2 - CHARACTERISTIC CURVES (values obtained with viscosity of 36 cSt at 50°C)



3 - HYDRAULIC FLUIDS

Use mineral oil-based hydraulic fluids, with the addition of suitable anti-frothing and anti-oxidizing agents. For the use of other types (water glycol, phosphate esters and others), please consult our technical department.

4 - OVERALL AND MOUNTING DIMENSIONS



	<p>DIPLOMATIC OLEODINAMICA SpA 20025 LEGNANO (MI) - P.le Bozzi, 1 / Via Edison Tel. 0331/472111-472236 - Fax 0331/548328</p>
--	---